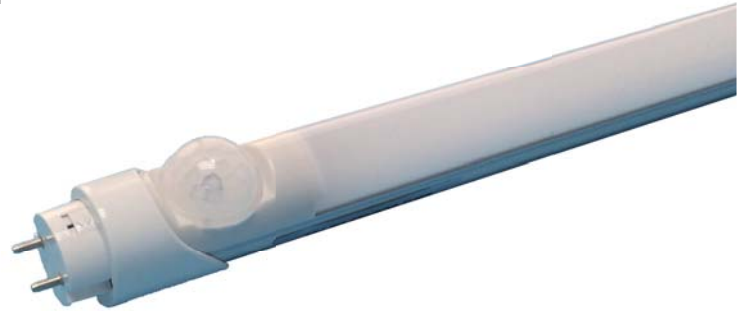


Overview:

LED lamp is a light-emitting diode (LED) product which is assembled into a luminous for use in lighting fixtures. LED lamps have a lifespan and electrical efficiency which are several times longer than incandescent lamps, and significantly more efficient than most fluorescent lamps.

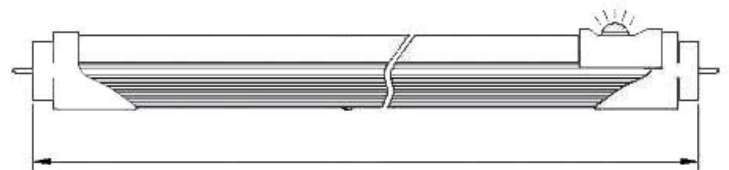
The inclusion of an infrared sensor means that the light dims when there is no movement in the desired area when the movement detected by the infrared sensor, the light will switch to full brightness for 30 seconds. (Depends on the different models).

In dimming status, the power consumption is around 30% compared with the full brightness. Therefore, the additional energy is saved.



Features:

- The rotatable led tube with 180 degree rotated end cap
- Infrared sensor effectively saves over 60% energy consumption.
- Very fast in sensor response, detection of movement is less than 0.3 seconds.
- Full range of input voltage: 90-265V AC 50/60Hz



Specification:

| Model Number | TL-2000 | TL-2010 |
|--------------------------|-------------------------|------------------|
| Input Voltage | 100-240V AC 50/60Hz | |
| Power consumption (Full) | 9W | 18W |
| Power consumption (Dim) | 3W | 5W |
| Luminous Flux (Full) | 900lm | 1800lm |
| Luminous Flux (Dim) | 300lm | 500lm |
| Power On Duration | 30 seconds | 30 seconds |
| Colour Rendering Index | >70 | |
| Colour Temperature | 2700-6000K | |
| Beam Angle | 140° | |
| Socket Base | G13 | |
| Material | Polycarbonate, Aluminum | |
| Dimensions | 25,8*30,5*588mm | 25,8*30,5*1198mm |
| Net. Weight | 0.35kg | 0.5kg |

Infrared Motion Sensor

When movement is detected within the induction area, LED turns on to full brightness

