



www.gst.com.cn
sales@gst.com.cn



GST Holdings Limited

The Intelligent Solution

Alarm Bell

GST-JM



GST-JM fire alarm bell, with simple structure, stylish design and easy installation, applies to fire alarm in the places such as factory, warehouse, hotel, airport and various high-rise buildings.

The alarm of the bell is intrigued by the 24VDC power supply, which starts motor, motor starting cam and then through gear starts firing pin to strike the bell cover.

Embedded in the electric circuit, the unilateral diode can lead to the current unilateral conduction to guarantee an appropriate polarization of the power supply.

Specification

Operating Voltage	DC 24V
Operating Current	0.015A
Power Rating	0.408W
Power Output	0.36W
Sound Output	95dB @ 1M
Operating Environment	-10~+50°C, 95% reality humidity
Dimension	Diameter 150mm, height 68mm

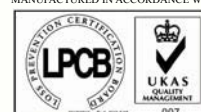
Indoor & Outdoor Installation

Indoor: wall-mounted or square box;
Outdoor: water-proof box.

The alarm bell is surface mounted or semi-flush mounted. The water-proof box should be chosen for the outdoor installation, and square box for the indoor installation.

The position should be lower than what the figure shows or subject to related authorities.

MANUFACTURED IN ACCORDANCE WITH



Note: Specifications are subject to change without notice.

GST China 80, Changjiang East Road, Economic & Technology Development Zone
Qinhuangdao, Hebei, China Tel: +86(0)335 850 2383 Fax: +86 (0)335 850 7588

GST England Lion Court, Staunton Harold Hall, Melbourne Road, Ashby de la Zouch,
Leicestershire, England LE65 1RT Tel: +44 1283 225 478 Fax: +44 1283 220 690

GST Dubai ZA04, Jebel Ali Free Zone, P.O.Box 17998, Dubai UAE
Tel: +971 (0)4 8833 050 Fax: +971 (0)4 8833 053



www.gst.com.cn
sales@gst.com.cn



GST Holdings Limited

The Intelligent Solution

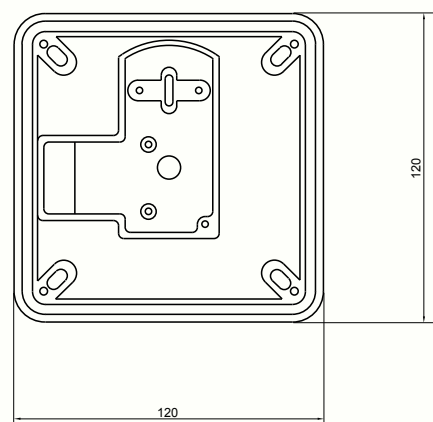
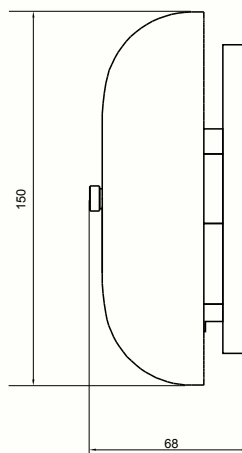
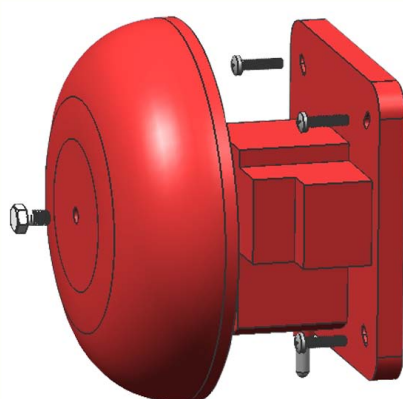
Alarm Bell

GST-JM

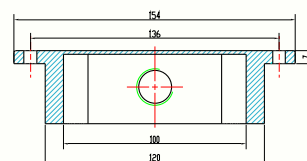
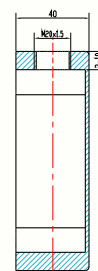
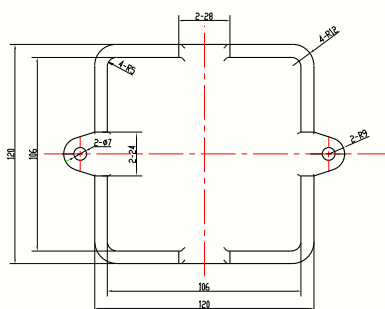
Mounting

Demount the bell cover, connect the output of the cover with the terminal using the connector, fix the bell on the box using the screw and mount the cover to complete the installation.

Note: to guarantee right polarization.



Water-proof Box Appearance & Dimension



MANUFACTURED IN ACCORDANCE WITH



Note: Specifications are subject to change without notice.

GST China 80, Changjiang East Road, Economic & Technology Development Zone
Qinhuangdao, Hebei, China Tel: +86(0)335 850 2383 Fax: +86 (0)335 850 7588

GST England Lion Court, Staunton Harold Hall, Melbourne Road, Ashby de la Zouch,
Leicestershire, England LE65 1RT Tel: +44 1283 225 478 Fax: +44 1283 220 690

GST Dubai ZA04, Jebel Ali Free Zone, P.O.Box 17998, Dubai UAE
Tel: +971 (0)4 8833 050 Fax: +971 (0)4 8833 053