

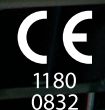
# XP95<sup>®</sup> INTRINSICALLY SAFE

ANALOGUE ADDRESSABLE SMOKE & HEAT DETECTORS

Giving 24 hour protection and split second response, XP95 has achieved global recognition as a premier range of detectors.

XP95 Intrinsically Safe detectors feature all the benefits of the standard range, but are developed specifically for use in hazardous areas.

XP95 IS is suitable for use in marine and offshore applications as well as in land-based systems and has been tested and approved to meet the requirements of the ATEX directive.



BASEEFA  
Approved  
EX ia IIC T5

  
apollo  
WORLD CLASS FIRE SOLUTIONS



# XP95<sup>®</sup>

INTRINSICALLY SAFE

## Intrinsically Safe Analogue Addressable Smoke & Heat Detectors



**XP95 IS Ionisation Smoke Detector**  
In this type of detector the voltage developed by current flowing in the sensing chamber is measured and transmitted, in digital form, to the control equipment which instigates a pre-alarm or fire alarm when smoke density reaches pre-set levels.  
**Part no: 55000-540**



**XP95 IS Optical Smoke Detector**  
The XP95 IS optical smoke detector has an internal pulsing IR LED and a photo-diode, which, in clean air conditions, receives no light from the IR LED and produces a corresponding analogue signal. When smoke enters the chamber it scatters light onto the photo-diode, increasing the signal transmitted to control equipment.  
**Part no: 55000-640**



**XP95 IS Heat Detector**  
Heat is measured by a single thermistor network which gives a voltage output proportional to the external air temperature. The signal is processed and transmitted to control equipment. The detector has a low air-flow resistant case for good contact between the thermistor and the surrounding air.  
**Part no: 55000-440**



**XP95 IS Base**  
The mounting base for IS detectors has been designed to accept only IS products, but the XPERT address card is identical with standard XPERT cards.  
*Note: standard bases will not accept IS detectors and any attempt to use standard bases will invalidate the approval.*  
**Part no: 45681-215 (Base)  
38531-771 (XPERT card)**

**XP95 IS Manual Call Point**  
The IS manual call point is based on a weatherproof version of a commercially available device. It features an "interrupt" facility to provide fast response to an alarm.  
A range of XP95 IS Manual Call Points is available. For more information refer to the website [www.apollo-fire.co.uk](http://www.apollo-fire.co.uk)



**XP95 Protocol Translator**  
The protocol translator is installed in the safe area immediately adjacent to the safety barrier and ensures integrity of communication between control equipment and field devices within the limits of BASEEFA approvals.  
**Part no: 55000-855 (single channel)  
55000-856 (dual channel)**



**XP95 IS Galvanic Barrier**  
The XP95 IS Galvanic Barrier is installed in the safe area and ensures system integrity and enables compliance with the ATEX directive.  
**Part no: 29600-098 XP95 IS Galvanic Barrier**



XP95 Intrinsically Safe (IS) detectors are a development of the well-established analogue addressable range of detectors from Apollo. The addresses of XP95 detectors are set by means of the patented XPERT card. By using this card, all the address data is held in the base without using electronic parts that might be damaged before commissioning.

Information on standard XP95 detectors is available from Apollo as follows:

- XP95 Single-page leaflet PP1038
- XP95 Engineering Product Guide PP1039

An Engineering Product Guide for the XP95IS range, PP1095, is also available on the website.



BASEEFA  
Approved  
EX ia IIC T5

For more information visit [www.apollo-fire.co.uk](http://www.apollo-fire.co.uk)

© Apollo Fire Detectors Ltd 2012



A HALMA COMPANY



36 Brookside Road, Havant,  
Hampshire, PO9 1JR, UK.

Tel: +44 (0)23 9249 2412  
Fax: +44 (0)23 9249 2754

Email: [sales@apollo-fire.com](mailto:sales@apollo-fire.com)  
Web: [www.apollo-fire.co.uk](http://www.apollo-fire.co.uk)